

BaanERP 5.0c

Conversion Guide for DEM Models

A publication of:

Baan Development B.V.
P.O.Box 143
3770 AC Barneveld
The Netherlands

Printed in the Netherlands

© Baan Development B.V. 1999.
All rights reserved.

The information in this document is subject to change without notice. No part of this document may be reproduced, stored or transmitted in any form or by any means, electronic or mechanical, for any purpose, without the express written permission of Baan Development B.V.

Baan Development B.V. assumes no liability for any damages incurred, directly or indirectly, from any errors, omissions or discrepancies between the software and the information contained in this document.

Document Information

Code: U7136B US
Group: User Documentation
Edition: B
Date: November, 1999

Table of contents

1	Introduction	1-1
2	To convert DEM models	2-1
	Steps to convert a DEM model	2-1
	<i>Import the DEM model</i>	2-1
	<i>Rename the component and component release (if necessary)</i>	2-2
	<i>Perform the actual conversion</i>	2-3
	<i>Check the DEM model conversion</i>	2-4
3	Glossary	3-1

Conversion Guide for DEM Models
ii

About this document

This document explains the conversion of DEM models when migrating to BaanERP 5.0c from:

- BAAN IVc4
- BaanERP 5.0b (SP05)

For more information on the component model see *U7330A US*.

1 Introduction

Between Baan releases, Baan sessions can differ with regard to coding or functionality. To be able to use the same DEM models when migrating to a new Baan release you need a conversion.

The component model is introduced in BaanERP 5.0c. A component model contains components, for example, BaanERP (or a third-party product, for example, MS Outlook 98). A component contains applications that represent executables, for example, a Baan session (or an executable of a third-party product, for example, MS Outlook 98 to create new e-mail). The component model contains a conversion tool that makes it possible to convert all references in a DEM model from one component release to another. For this conversion, you must maintain conversion information between components.

Conversion information is available between the following Baan releases:

- BAAN IVc4 to BaanERP 5.0c
- BaanERP 5.0b (SP05) to BaanERP 5.0c

2 To convert DEM models

The conversion procedure, described in this chapter, assumes you have exported the DEM models by using the Export Version Dump (tgbrg1235m000) session in the Baan release from which you are migrating.

Steps to convert a DEM model

Import the DEM model

Start the Import Conversion Dump (tgbrg1245m000) session to import the DEM model that you have exported from your previous Baan release.

NOTE

If you import a BAAN IVc DEM model, you are prompted to specify the BAAN IVc component that contains the applications that represent the Baan sessions. The BAAN IVc component is available in the BaanERP 5.0c installation.

Rename the component and component release (if necessary)

The naming of the component and component release that is used in the DEM model must be the same as the official Baan release name. If not the conversion will not work.

To find the official name start the Conversion of Applications (tgbg5150m000) session to view the conversions that are available in BaanERP 5.0c. Determine the conversion that is applicable. Check if the name of the source component and component release is the same as the name of the component and component release referenced in the DEM model.

If the name differs, you can rename the component and component release where it is used in the business processes and support applications. Start the Rename Component & Release Codes in Activities and Supp. Applications (tgbg5220m000) session to rename the component and component release.

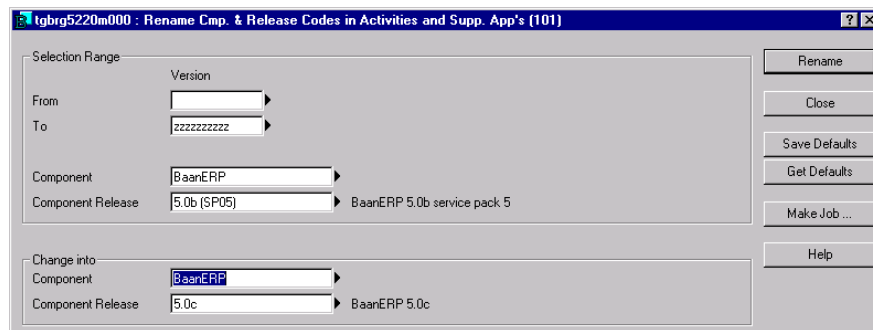


Figure 2-1 Rename component release where used in business processes and support applications

Perform the actual conversion

- 1 Start the Convert Applications in Model (tgbg5251m000) session (see figure 2-2).

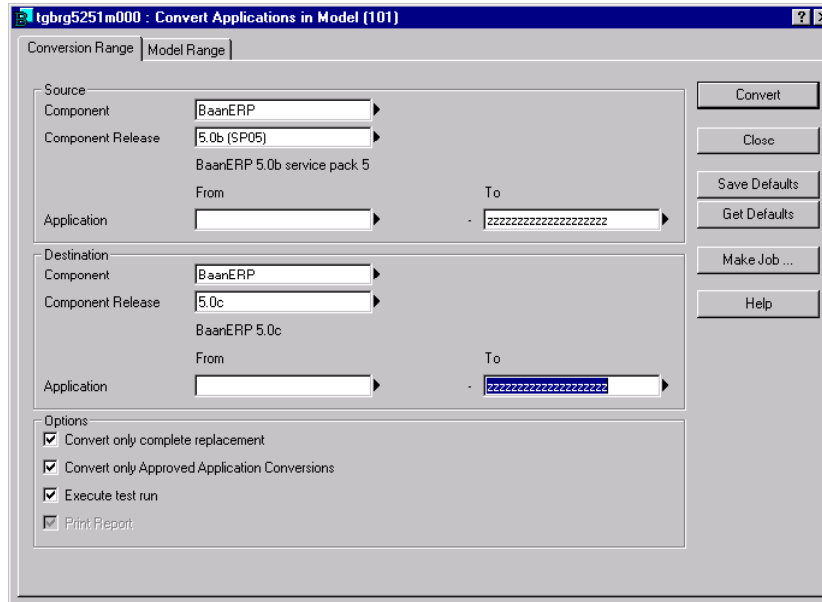


Figure 2-2 Convert Applications in Model – Conversion Range

- 2 As the source component you choose the Baan release you are migrating from (BAAN IVc or BaanERP 5.0b (SP05).
- 3 As the destination component you select the Baan release you are migrating to (BaanERP 5.0c).
- 4 The **Convert only Complete Replacement** check box is selected by default. Complete replacement means that the destination application fully covers the functionality of the source application.
- 5 The **Convert only Approved Application Conversion** check box is selected by default. This means that only the conversions that are approved (this information is stored for each conversion of an application) will be converted.
- 6 The **Execute Test Run** check box is selected by default, so you can decide, based on the report of the test run, whether or not to actually convert the DEM models.

- 7 Go to the **Model Range** tab and select the version and the range of business processes and support applications to convert. Normally this is the complete range (see figure 2-3).

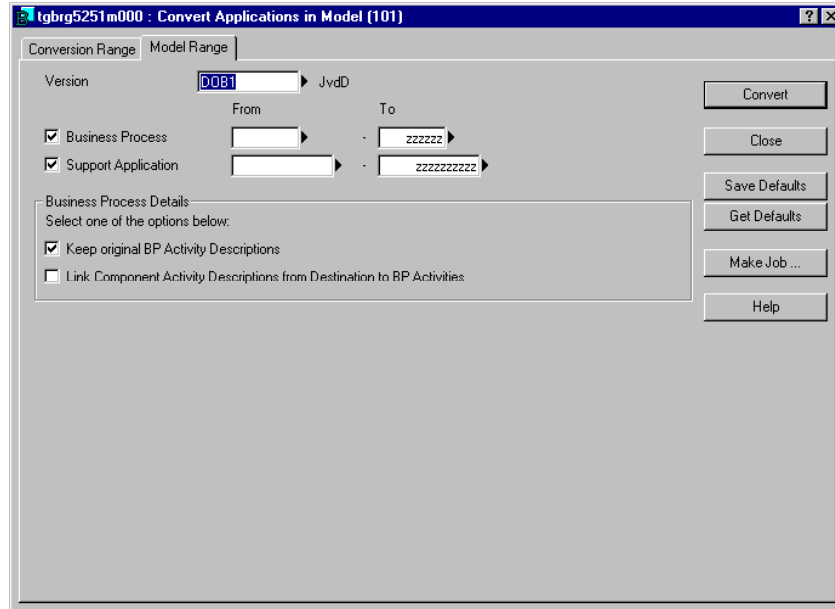


Figure 2-3 Convert Applications in Model – Model Range

- 8 From the **Business Process Details** group box you can choose to keep the original activity description or to replace it with the description of the application.
- 9 Click **Convert** to start the conversion.

Check the DEM model conversion

A report is created by the Convert Applications in Model (tgbrg5251m000) session if a Baan session could not be converted. The items in the report need to be investigated and solved manually because conversion information was not available.

3 Glossary

Approved conversion	Specifies whether a conversion is approved.
Complete replacement	Indicates (when set to Yes) whether the destination application includes the functionality of the source application.
Component	A set of applications and their related data.
Component release	The identification of the issue of a component.
Destination component, component release and application	The combination of component, component release, and application to which to convert.
Source component, component release and application	The combination of component, component release, and application to which to convert from.

